



**CB**  
CAS EN BAS  
Saint Lucia

*A MODERN PERSPECTIVE  
WITH AN ISLAND SOUL.*

[www.casenbasbeachresort.com](http://www.casenbasbeachresort.com)

**HO**  
HOTELS AND RESIDENCES  
BY sbe



# The Resort

*Welcome to your new headquarters for  
exceptional experiences.*

Leveraging over two decades of sbe's expertise and proven success in lifestyle hospitality, we bring the best of experiential mastery — transforming every space into exceptional hubs for dining, nightlife, and wellness — to one of the most beautiful destinations in the Caribbean: Saint Lucia.

Located in the prestigious Cap Estate on the northern tip of the island, HQ Cas En Bas by sbe presents the perfect home away from home; secluded and exclusive, yet only a short drive from the buzzing social and cultural life in Rodney Bay.

Like the island itself, the resort offers residents the perfect balance of adventure and luxury,

with privileged access to an exciting range of dining options, nightlife, and branded events.

Swim in the pool, yoga in the gazebo, recharge on the beach, or kick back and relax over cocktails.

Wherever you are, you'll enjoy attentive, discrete service as our intuitive and friendly staff stand at the ready.

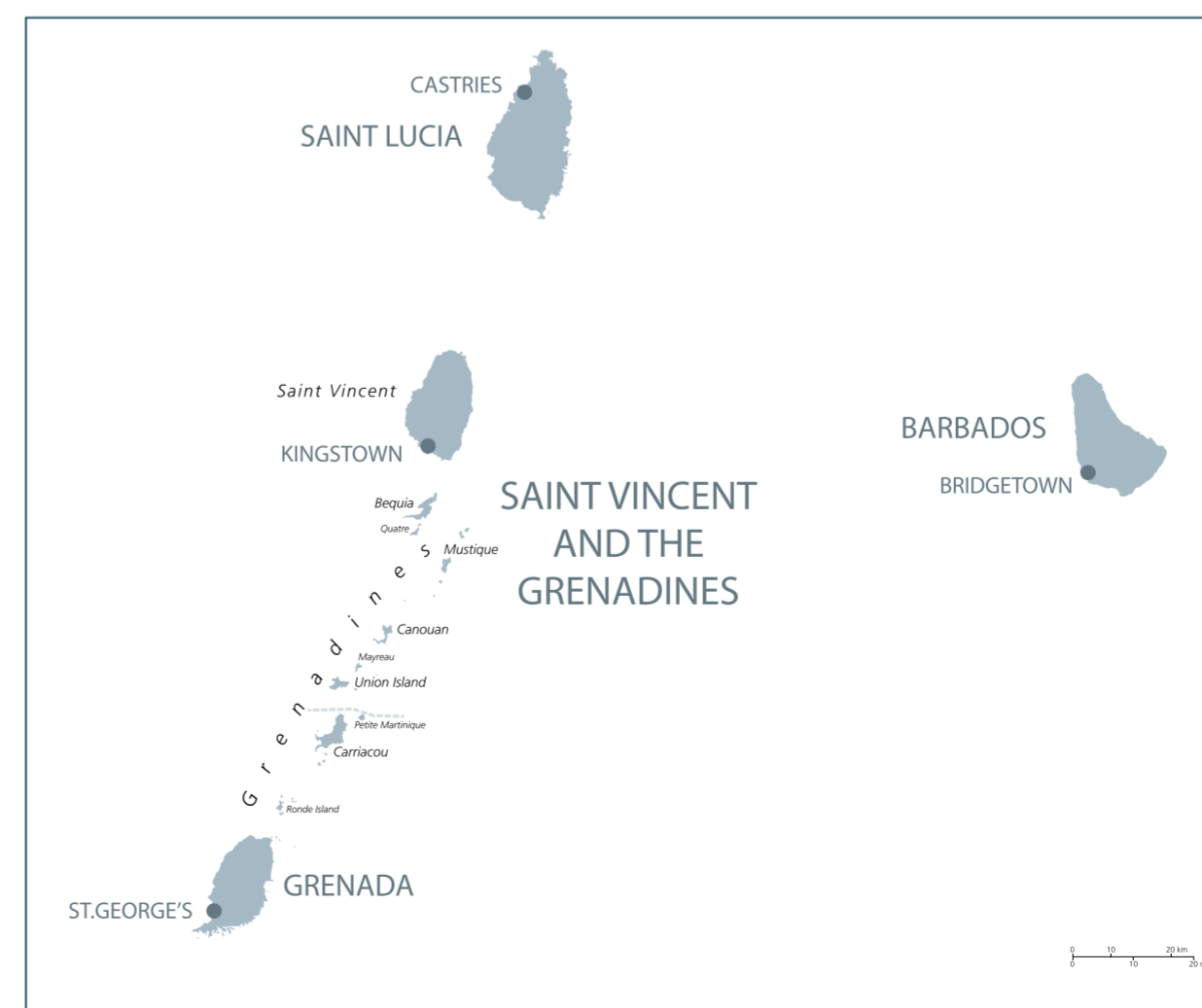
# Perfectly Situated

St. Lucia welcomes its first vibrant, cosmopolitan resort for today's sophisticated global escapists. This one-of-a-kind resort elegantly delivers a contemporary experience that is in tune with the island's soul.

HQ Cas En Bas by sbe is a 75 minute drive from the international airport and less than a 10 minute drive from Rodney Bay, the country's most popular tourism and entertainment hot spot.

The award-winning resort is idyllically situated between the 18-hole championship course at St. Lucia Golf & Country Club, the picturesque Cas En Bas Bay and its 1km sandy beach, and the new uber-luxury Cabot golf estate.

With direct flights from Miami, New York, Boston, Chicago, Atlanta, Charlotte, Toronto, London, and many more international cities, Saint Lucia is a convenient and easily accessible tropical island getaway.



“  
*St. Lucia's shimmering beaches and lush mountain peaks are known as some of the most beautiful in the Caribbean.*  
 ”

# Branded Residences

A collection of spacious freehold studio, one and two bedroom apartments (from 366-905 sq ft / 34-84 sq m), each meticulously designed to optimise the bright open plan accommodation.

These beautifully appointed branded residences benefit from high ceilings, en suite bathrooms, well-equipped kitchens, balconies, and bespoke furnishings created by our interior design partner, Kit & Kaboodle.

- Generous 2.5m ceilings
- Full height sliding doors
- En suite bathrooms
- Private balcony or terrace
- Pool or tropical garden views
- Air conditioning and premium fittings throughout
- Well-equipped kitchen
- Bespoke furnishings
- Original artworks
- 9 international awards including *Best Apartment*, *Hotel Architecture*, *New Small Hotel Design*, and *MUSE Interior Design Gold Award*.

**With all this and more, it is unsurprising that over 30% of the apartments were sold *before* the official launch!**



# Homeowner Benefits

An exceptional opportunity to own a professionally managed, freehold vacation home at HQ Cas En Bas by sbe, that comes with generous benefits:

- An HQ Hotels & Residences by sbe resort
- Industry-leading *Wyndham Rewards* loyalty program
- Low purchase reservation fee
- Expert management from sbe, a pioneering icon in lifestyle hospitality
- Housekeeping services
- Dedicated concierge to assist with your day-to-day requirements
- Residents' Card provides in resort and external benefits and discounts
- 24/7 security within gated estate
- Managed rental program available with:
  - 4 weeks annual usage
  - 100% flexibility to stay at any other times (subject to availability)
- Developer funding available (subject to qualification; terms and conditions apply)
- Pre-arrival delivery service, so your apartment can be stocked with essential provisions
- Complimentary elite *Wyndham Rewards* status, providing exclusive perks at Wyndham global properties.









Resort entrance and gatehouse

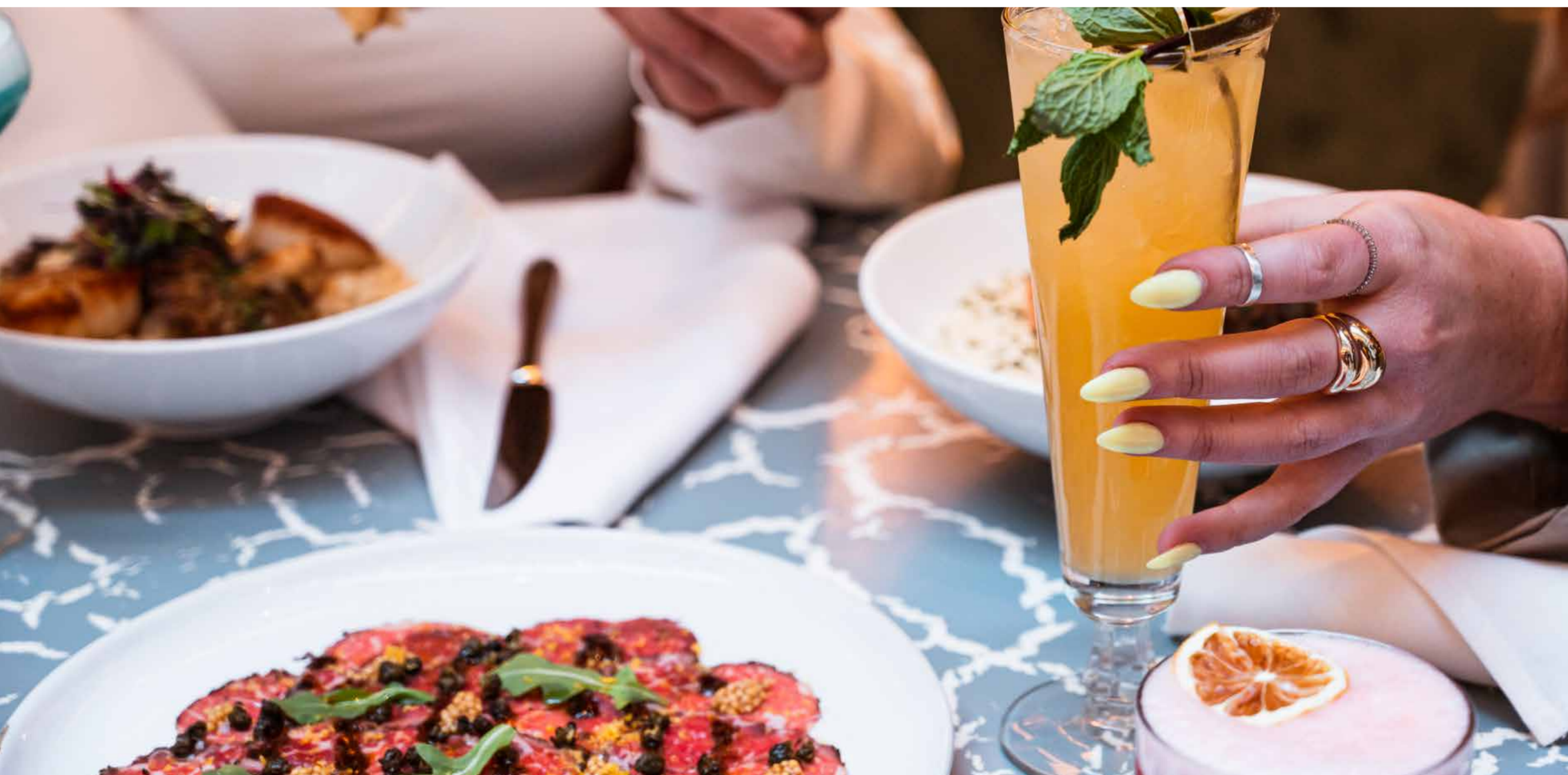


Resort reception



## A Culinary Cornerstone

*Innovative cuisine meets refined, elegant settings, perfectly tailored for those with a taste for the extraordinary.*



We don't just settle for offering some of the tastiest and most original cuisine in St. Lucia.

Our culinary team will work its magic to create memorable dining offerings at HQ Cas En Bas by sbe.

sbe applies its global lifestyle hospitality expertise to bring a level of culinary refinement that has been honed and perfected in the best kitchens and bars around the world.

Its global portfolio features world-renowned chefs including Master Sushi Chef Katsuya Uechi, Michelin-starred Chef Dani Garcia, Dario Cecchini, and Wes Avila.

Disruptive Restaurant Group is sbe's gastronomic engine, cultivating an impressive range of award-winning restaurants and lounges around the world.

# Never a Dull Moment

Discover St. Lucia's most cherished offerings through the HQ Cas En Bas by sbe lens, with a personalised itinerary created around your individual interests by our dedicated Activities Team.

Whether you are an adventure seeker, sun worshipper, foodie, honeymooner, or culturally curious, it's a far cry from your typical Caribbean experience.

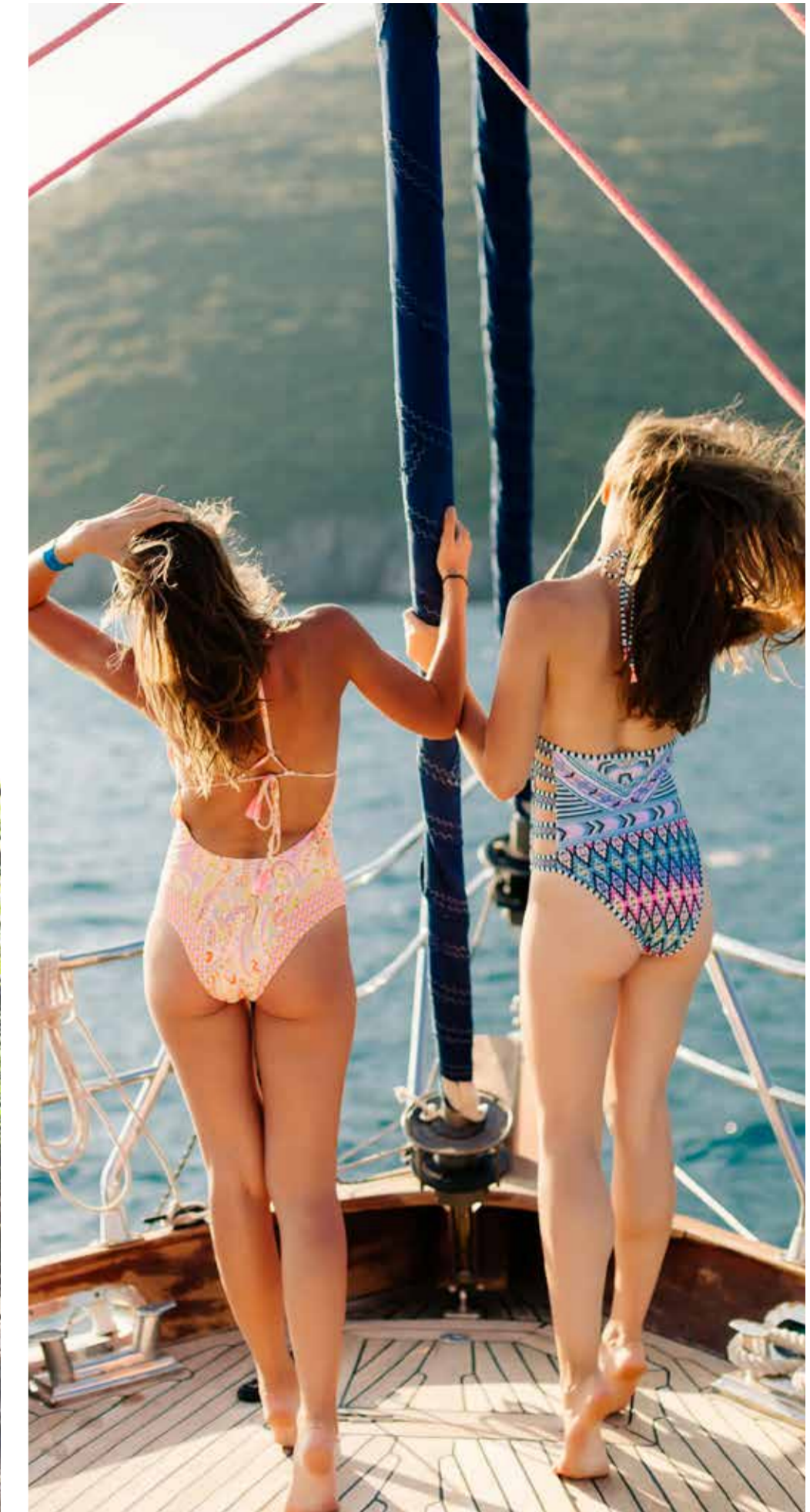
Hike up The Pitons, play a round on our neighboring 18-hole championship course, kite surf at the school on Cas en Bas beach, or try adrenaline-fuelled zip-lining through the rainforest canopy.

When you feel the need to recharge, lie back on a sun lounger on our spectacular beach, or relax with a full body massage.

St. Lucian's find any excuse to party. There is a calendar of festivals, and you can soak up the atmosphere at the weekly Anse La Raye Fish Friday and the Gros Islet Street Party, just a short drive away.

- Golf
- Sailing
- Scuba diving & snorkelling
- Kite & wind surfing
- Kayaking & paddle boarding
- Whale watching & dolphin spotting
- Seatrekking
- Water skiing
- Horse riding
- Rainforest zip-lining experience
- Rainforest aerial tram ride
- Cycling along rainforest trails
- Quad biking
- Climbing The Pitons
- Rainforest hiking
- Thermal springs, sulphur baths & rainforest waterfalls
- Pigeon Island National Park
- 'Drive-through' volcano
- Vibrant bars and restaurants

“  
*Twenty years from now you will be more disappointed by the things you didn't do than by the ones you did do. So throw off the bowlines. Sail away from the safe harbor. Catch the trade winds in your sails. Explore. Dream. Discover.*  
”  
Mark Twain



# HQ

HOTELS AND RESIDENCES  
BY **sbe**

**HQ Hotels & Residences** is a pioneering 'smart lifestyle' brand born from the concept that hotels should be in the heart of their cities—serving as the 'headquarters' for exceptional dining, nightlife, and wellness.

Partnering with visionary Sam Nazarian, sbe brings over two decades of unmatched expertise in creating globally renowned culinary and lifestyle hospitality brands.

Each property is purposefully crafted to redefine richness through experience, turning every hotel space into an exceptional community hub.

Through a strategic alliance with **Wyndham Hotels & Resorts**, HQ properties pair sbe's unparalleled lifestyle experiences with the unrivaled scale of the world's largest hotel franchisor, granting our residents and guests access to Wyndham Rewards, the industry's number one hotel loyalty program.

WYNDHAM  
REWARDS®



Moor Park House, Surrey

**CB**  
**CAS EN BAS**  
 Saint Lucia

**HQ**  
 HOTELS AND RESIDENCES  
 BY **sbe**

# The Developer

Wellington Estates develops and manages its own property portfolio and investments, which consist of unique properties delivering long term capital growth and high rent yields.

Over the past two decades, Wellington Estates and its Chairman have been involved in high profile Grade I & II\* listed projects of national importance across the UK, as well as resort and leisure developments in the Caribbean.

A highly experienced international property developer with a track record of delivering unique and prestigious sites, the company's expertise is in sourcing, buying and developing complex sites in the UK and overseas.

With a comprehensive knowledge of international development and investment projects, Wellington Estates is the ideal partner for this prestigious project.



THIS IS NOT AN OFFERING OR SOLICITATION IN ANY JURISDICTION WHERE PROHIBITED BY LAW OR WHERE PRIOR REGISTRATION IS REQUIRED BUT HAS NOT BEEN OBTAINED.

Cameron Inc. ("Developer") and its affiliates are solely responsible for the marketing and sale of the residences. sbe and/or its affiliates ("sbe") has granted Developer the right to offer and sell the residences using the sbe name pursuant to a revocable license agreement. Neither sbe nor any of its affiliates is responsible for, or makes any representation or warranty, concerning the development, marketing or sale of the residences. The structures, materials, amenities, services and designs described and depicted herein are based upon current development plans. Some images featured in this material are an artist's conceptual rendering of the project. The Developer reserves the right to modify, update, alter, delete or change any designs, specifications, dimensions, amenities, brands, fixtures, finishes, equipment, services, and features of this project, without notice and without incurring obligation. Specifications, dimensions, measurements, and other information in this material and other Developer materials are approximate and based upon preliminary designs and drawings and are not intended to form any part of the contract for the sale of an individual residence. Each residence, including square footage, may differ due to variations in construction. All prices for the residences and the prices for the furnishing packages are subject to change at any time and without notice.

To find out more about owning a freehold vacation home, visit  
[www.casenbasbeachresort.com](http://www.casenbasbeachresort.com)

© Cameron Inc. All rights reserved. The residences at HQ Cas En Bas by sbe are not owned, developed or sold by sbe or its affiliates. Cameron Inc. uses the brand marks under a license.